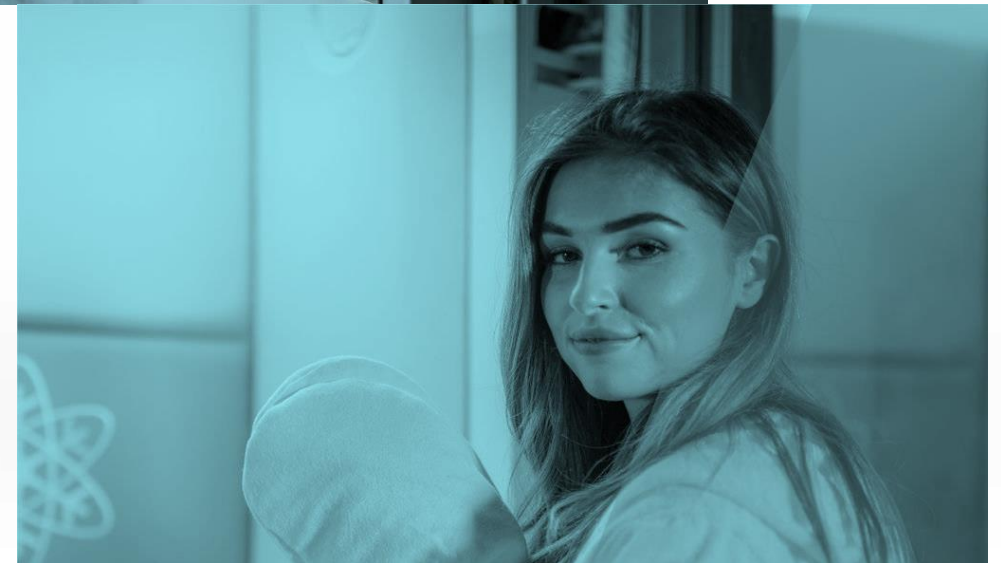


CRYO



# Traditional devices on the market

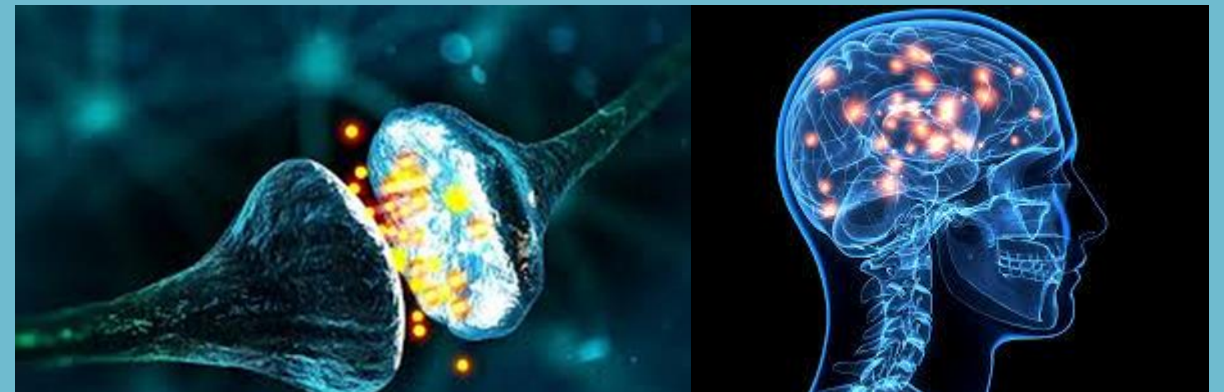
## Traditional cryo chambers:

- are designed for many patients at the same time
- are not cost effective
- many customers complain about the lack of intimacy during overcrowded sessions.



# Cryo SAUNA the Whole body treatment PARADOX

- First so called cryo sauna were created mainly due to simplicity of construction and relatively low price of equipment.
- Producers were trying to convince potential clients that both cryochambers and cryo saunas are equal.
- Cryo Sauna can not be name **whole body cryotherapy** as the head and neck is not under therapeutical stimulation.
- Head and neck are not exposed to low temperatures and this gradient may cause a respiratory and nervous distress.





# Cryo SAUNA the Whole body treatment PARADOX

- Thermal therapy means not only topical effect on the skin; but the most important is thermoregulative reaction of the whole organism connected with stimulation of different types of receptors, structures registering the temperature gradient in time.
- In this process main role play receptors located in the central neural system which is **hypothalamus**. Thermoreceptors of the hypothalamus control the thermoregulation reactions of the whole body. Hypothalamus also supervises vegetative and hormonal functions of the human organism. Stimulation of receptors in this organ has basic importance for so called “biologic thermostat”.
- Influence of thermic stimulus on ions of Ca and Na , interleukins IL1, prostaglandins concentration results in creation of certain clinical symptoms , increasing hormones concentration , increasing of modulators secretion. All this creates specific alarm reactions and finally gives certain therapeutic benefits. (Dr Zimmer 2016)



# CRYO SAUNA

## SAFETY ISSUES:

- Have direct inject nitrogen which might cause burns.
- There are significant number of cases of fainting due to nitrogen inhalation.
- There are cases of death.



# The future of cryotherapy – ARCTIC experience

- Arctic allow users to experience a full body freeze including neck and head which are the most important thermoregulation centres in human body.
- Arctic separates cryogenic gases from the patient.



THANK YOU



[www.cryo.com](http://www.cryo.com)